



CalAIM and Peer-Run Organizations

Patrick Gauthier | August 7, 2023





Advocates for Human Potential, Inc. (AHP) PWI & EPOC Team



Kathleen West
Project Director



Tammy Bernstein
Deputy Director



Kate Cox
Operations Manager



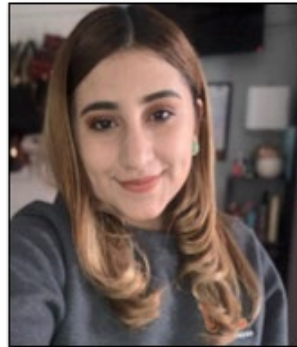
Kayla Halsey
*BHOWD Data & Analyses
Manager*



Caitlin Storm
*Quality Assurance
Coordinator*



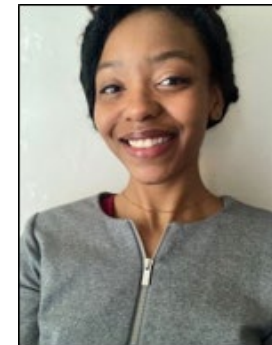
Brett Hall
Grantee Coach Lead



Rosy Larios
Grantee Coach



Neyat Tefery
*Grantee Coach & Ops
Specialist*



Raven Nash
Grantee Coach



Vic Walker
Operations Specialist



Patrick Gauthier

Managing Director of Strategic Development
Advocates for Human Potential

Patrick Gauthier, is the Managing Director of Strategic Development at Advocates for Human Potential (AHP). He has been with the company since 2009.

He is a national thought-leader as it relates to the effective implementation of policies and programs that properly align the resources and incentives of health and behavioral health payers, providers, and consumers.

Over the course of more than 30 years in the behavioral health field, Mr. Gauthier has held a variety of management and executive positions. He has advised and developed numerous public/private performance-based partnerships for Medicaid and other state agencies.

Mr. Gauthier is also a strong voice for Mental Health Parity and Addiction Equity, housing the unhoused, and expanding the behavioral health workforce.



Agenda

- Overview of CaAIM
- CaAIM Registration
- CaAIM and Peer-Run Organizations
- Q&A

CaAIM

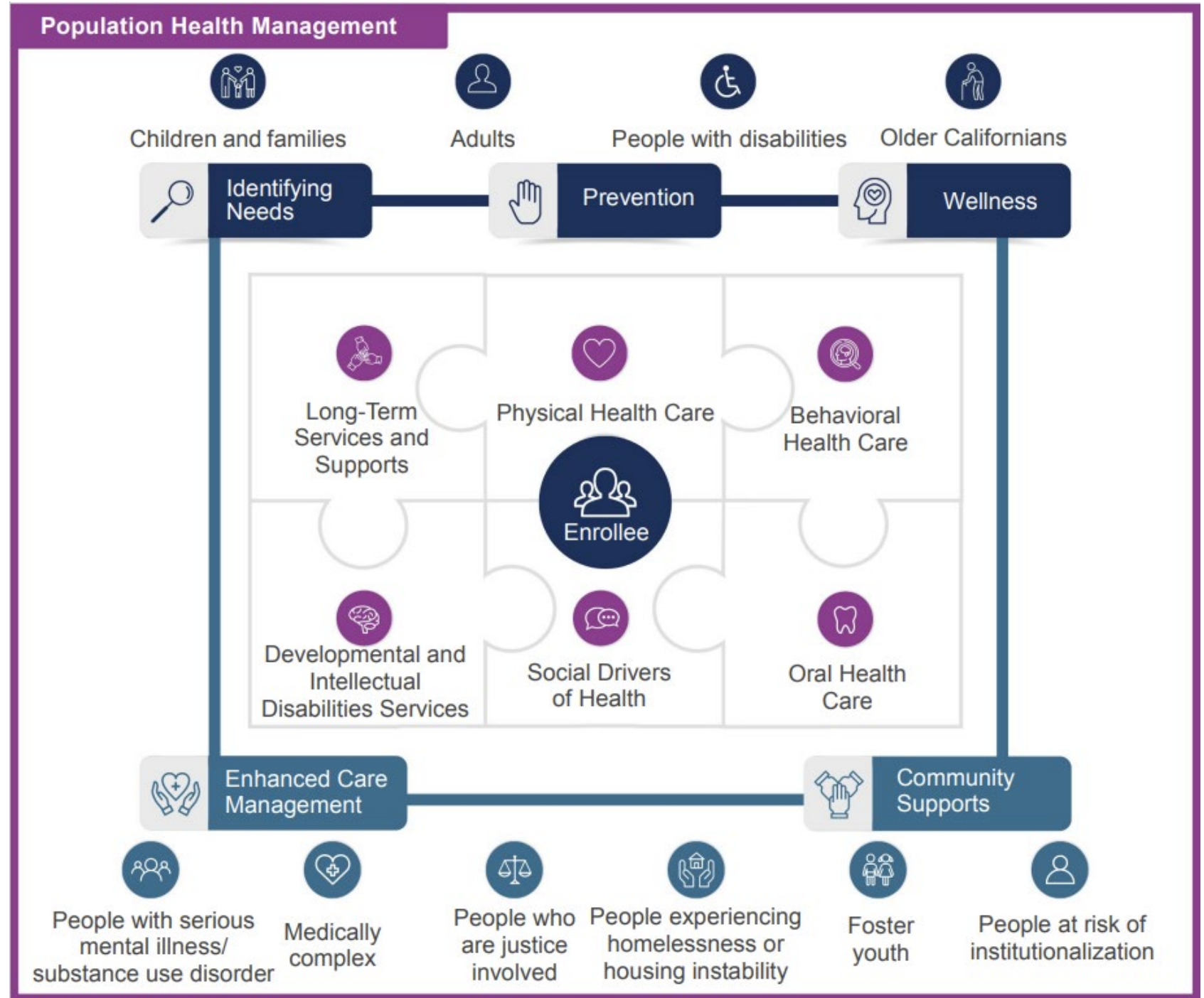
DHCS is innovating and transforming the Medi-Cal delivery system with CaAIM, moving towards a **population health approach that prioritizes prevention and whole person care**. Among the goals is extending **person-centered supports** and services beyond hospitals and health care settings directly into the community.

CaAIM has the following goals:

1. Identify and manage comprehensive needs through **whole person care programs approaches**, addressing social drivers of health.
2. Improve quality outcomes, reduce health disparities, and **transform the delivery system** through value-based initiatives, modernization, and payment reform.
3. Make Medi-Cal a more consistent and seamless system for enrollees to navigate by **reducing complexity and increasing flexibility**.



CalAIM Focus



CalAIM Aims to...

- Standardize and **simplify**
- Promote **collaboration** and partnership
- Make Providing Access and Transforming Health or PATH **Technical Assistance** and Infrastructure Development available. Nearly \$1.8 billion.
- Support **Regional Coalitions**
- Implement **Enhanced Care Management (ECM)**
- Implement **Community Supports** (formerly known as *In Lieu Of* services)
- Coincide with **Behavioral Health Delivery System Transformation**
 - **Integrate** care and services
 - **Create Access** to care and services

Visit:

www.dhcs.ca.gov/calaim

Regional Coalition Building

Collaborative Planning and Implementation

- The PATH Collaborative Planning and Implementation Initiative provides funding for county and regional collaborative planning efforts **to support implementation of Enhanced Care Management (ECM) and Community Supports**. Participant registration will remain open throughout the Collaborative Planning initiative.

Learn more about the collaboratives: [PATH | TPA \(ca-path.com\)](https://ca-path.com)

Register here: [CA PATH Collaborative Participant Registration \(jotform.com\)](https://jotform.com)

CalAIM Community Supports

- **Community Supports** are new statewide services provided by Medi-Cal managed care plans as cost-effective alternatives to traditional medical services or settings.
- Community Supports are designed to address social drivers of health (factors in people's lives that influence their health).
- These services are building on and scaling existing work in the Whole Person Care Pilots, the Health Homes Program, and Home and Community Based Service Waivers.

Community Supports

All Medi-Cal managed care plans are encouraged to offer as many of the following

14 Community Supports as possible:

- Housing Transition Navigation Services
- Housing Deposits
- Housing Tenancy and Sustaining Services
- Short-Term Post-Hospitalization Housing
- Recuperative Care (Medical Respite)
- Day Habilitation Programs
- Caregiver Respite Services
- Nursing Facility Transition/Diversion to Assisted Living Facilities
- Community Transition Services/Nursing Facility Transition to a Home
- Personal Care and Homemaker Services
- Environmental Accessibility Adaptations (Home Modifications)
- Medically Supportive Food/Meals/Medically Tailored Meals
- Sobering Centers
- Asthma Remediation

Peer-Run Organizations

[Visit: Peer Support Services \(ca.gov\)](https://www.dhcs.ca.gov/Programs/Pages/Peer-Support-Services.aspx)

- DHCS launched the Medi-Cal Peer Support Services benefit in July 2022, in the **SMHS and DMC-ODS programs**.
- DHCS added Medi-Cal Peer Support Specialists (Peers) as a unique provider type within specific reimbursable services.
- As of January 2023, 50 counties include Medi-Cal Peer Support Services as a benefit in one or both of their delivery systems.

CaAIM and Peer-Run Organizations

- Peer support specialists and community health workers will advance California's effort to promote health equity by providing culturally competent services.
- CaAIM will support crucial transitions, including the path from [homelessness to housing](#), from incarceration to community re-entry, and from institutional to home-based care.
- For claims to be adjudicated, Peer Support Services must be claimed in accordance with Short-Doyle/Medi-Cal (SD/MC) claiming procedures outlined within [BHIN 22-026](#).

CaAIM PATH TA Vendor Marketplace

The Marketplace Offers TA in Seven Domains:

1. Building Capacity: Data Collection, Management, Sharing and Use
2. Community Supports: Strengthening Services that Address the Social Drivers of Health
3. Engaging in CaAIM Through Medi-Cal Managed Care
4. Enhanced Care Management (ECM): Strengthening Care for ECM Population of Focus
5. Promoting Health Equity
6. Supporting Cross-Sector Partnerships
7. Workforce

CaAIM PATH TA Eligible Recipients

TA Recipients may include, but are not limited to:

- County, city, and local government agencies
- Public hospitals
- Providers (ECM) and Community Supports provider, or those that intend to contract as an ECM/Community Supports providers including those serving as a provider of housing services
- Community Based Organizations (CBOs)
- Medi-Cal Tribal and Designees or Indian Health Programs
- Others, as approved by DHCS

» Applicants **must**

- » 1. be actively contracted with Managed Care Plans (MCPs) for the provision of ECM / Community Supports, or
- » 2. have a signed attestation that they intend to contract to provide ECM / Community Supports in a timely manner, or
- » 3. be approved by DHCS to register as a TA recipient

» **MCPs are not eligible to receive TA support through the TA Marketplace**

CaAIM PATH TA Vendor Marketplace



Shop TA Marketplace

Sign In

[Home](#) / Shop Technical Assistance Marketplace

Technical Assistance Marketplace

Welcome to the **CaAIM PATH** Technical Assistance Marketplace

Shop



Explore the TA Marketplace by clicking...

[PATH | TPA \(ca-path.com\)](https://ca-path.com)

The CaAIM PATH Technical Assistance (TA) Marketplace is a virtual marketplace, a one-stop-shop where providers, community-based organizations, counties, and others can obtain technical assistance resources to establish the infrastructure required to implement high quality Enhanced Care Management (ECM) and Community Supports (CS).

The TA Vendors available in the TA Marketplace were selected for their expertise and experience providing technical assistance in areas identified as priorities by ECM and Community Supports providers. More than 60 unique TA Vendors organized across seven distinct TA Domains can currently be accessed through the TA Marketplace.

CaAIM PATH TA Marketplace

TA will consist of one or the other:

Hands-on



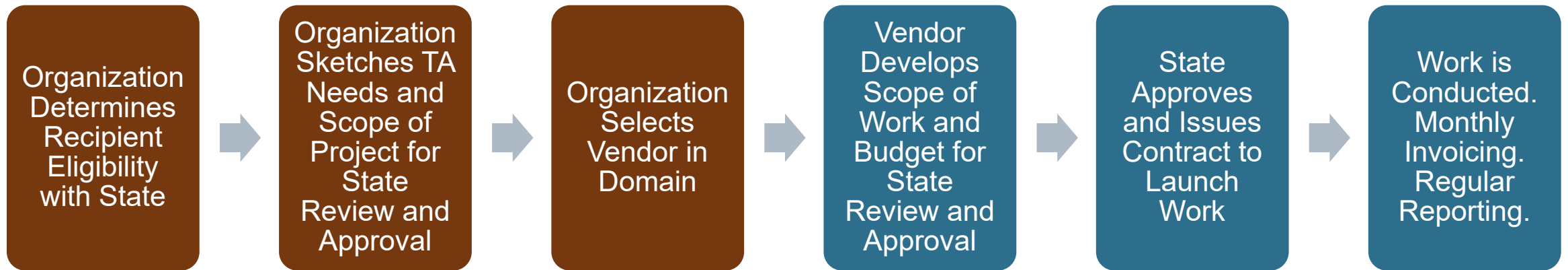
Hands-on TA makes it possible for entities to work closely with their chosen TA Vendor to design and implement TA that is uniquely suited to their priorities and needs. TA goals, deliverables, and timeframes are all developed "from scratch," and are thus highly specific to the individual entity and project.

Off-the-Shelf



Off-the-shelf TA gives eligible entities a wide range of TA offerings that are packaged for convenient, efficient delivery and are ready to go with minimal upfront planning. Off-the-shelf TA projects have clear, pre-established goals and defined timeframes for easy consideration and implementation, yet can be customized to meet an entity's priorities and needs.

CaIAIM PATH TA Marketplace Process



Providers MUST Pursue MCP Contracts to Receive TA

- TA recipients that are contracted with a MCP for ECM or CS can access both Off-the-Shelf TA Projects and Hands-On TA Projects in all 7 TA Domains.
- TA Recipients that are not yet contracted with a MCP (but are in process) may access Off-the-Shelf TA projects in Domain 3: Engaging in CalAIM through Medi-Cal Managed Care or Domain 4: Enhanced Care Management (ECM): Strengthening Care Through 'Population of Focus' only.

How Grantees Can Benefit From the TA Marketplace

- Customized TA strategies can be created based on your organization's needs, culture, and goals.
- TA domains and offerings are meant to break down common barriers to engaging in Medi-Cal and providing services.
- Marketplace TA projects can be built to
 - Fit provider capacities
 - Be respectful of time
 - Be delivered via methods that maximize impact, minimizing time away from critical day-to-day work.

Q&A

Additional Resources

www.dhcs.ca.gov/calaim

[Peer Support Services \(ca.gov\)](#)

www.dhcs.ca.gov/Pages/CalAIM-Behavioral-Health-Initiative-Frequently-Asked-Questions.aspx

[CalAIM Enhanced Care Management Policy Guide](#)

[Download the factsheet about the CalAIM initiative to advance **Enhanced Care Management**](#)

[Download the factsheet about the CalAIM initiative to advance **Community Supports** to address social drivers of health.](#)

[Download the supplemental fact sheet with more details about each of the **Community Supports**.](#)

[**Medi-Cal Community Supports**, or In Lieu of Services \(ILOS\), Policy Guide](#)

[BHIN 22-026 \(ca.gov\)](#)



Thank You