

Behavioral  
Health  
Workforce  
Development



# PWI/EPOC Peer Values, Ethics & Data Collection

**Presented by: PWI Faces and Voices of Recovery**

**Wednesday, September 14, 2022**



**FACES & VOICES  
OF RECOVERY**

ADVOCATE. ACT. ADVANCE.

# Agenda



## TOPIC

Introduction & Agenda Setting

Program Sustainability and the Program Sustainability Assessment Tool

AHP Funding Opportunities

Medi-Cal Billing

Resource Availability

In Memoriam -

# PWI/EPOC Team at Advocates for Human Potential (AHP)



Kathleen West  
Project Director



Tammy Bernstein  
Project Manager



Kate Cox  
Operations Manager



Kayla Halsey  
Grantee Liaison &  
Data Coordinator



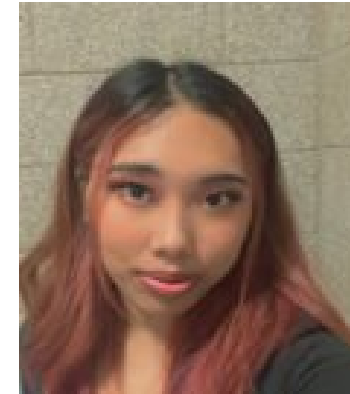
Marques Davis  
Grantee Liaison



Rosy Larios  
Grantee Liaison



Caitlin Storm  
Quality Assurance



Vic Walker  
Operations Specialist

# Ethical Considerations

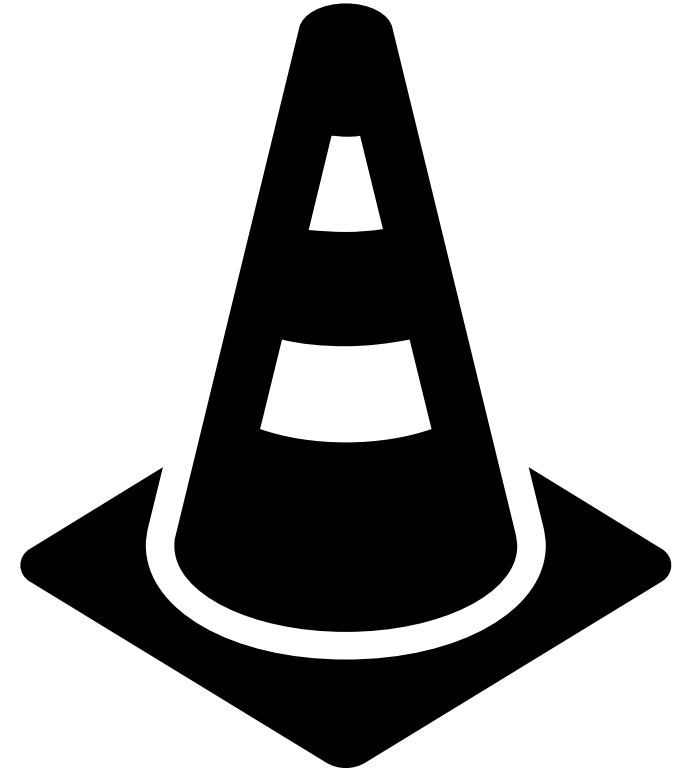
## Collecting Data for Peer Support

Presented by: Brandi Vore

Adjunct Faculty

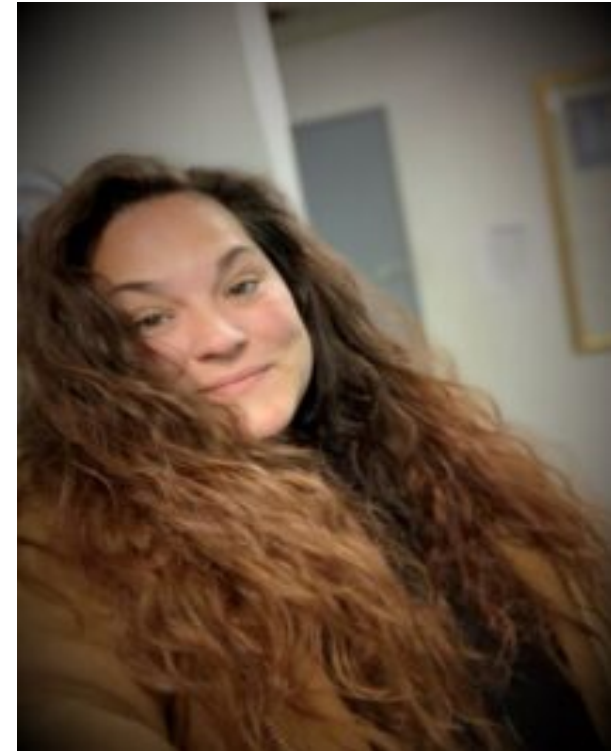
## Safety Agreements

- Open-mindedness
- Respect
- Encouragement
- “Ouch”
- “Stretch”
- Confidentiality
- What else?



# About Brandi Vore

- She has worked in the recovery field for over 10 years.
- Has a bachelor's degree in Operations Management and is a Certified Peer Recovery Support Specialist with training in supervision.
- She is also the Executive Director of an accredited Recovery Community Organization.





# Ethical Considerations

## In Data Collection

- Explain your reasons
- Get permission
- Explain potential harm
- Remain neutral





# Ethical Considerations

## In Data Collection

- Will findings be anonymous?
- Convenience Sampling
- Respectful of Time
- Protect the data
- Share the findings



# Principals of Peer Support

- Shared Experience
- Hope and Recovery
- Holistic Framework
- Focused on the future



# Peer Support and Data Collection

## Peer Support Values Privacy

- Even the title of tools can be contradictory to the nature of peer support work, as many organizations do not consider themselves to be 'care' providers.



# Peer Support and Data Collection

- Pressure from funders
- What to collect?



# Tools for Data Collection

## Specific to Peer Recovery Programs

- Tools to capture recovery capital
  - ReCAPS
  - BARC-10
  - Recovery Capital Index
  - Recovery Planning Worksheet





# Questions

# Resources

- North Jersey Health Collaborative [https://www.njhealthmatters.org/content/sites/njhc/Ethical\\_Considerations\\_in\\_Data\\_Collection.pdf](https://www.njhealthmatters.org/content/sites/njhc/Ethical_Considerations_in_Data_Collection.pdf)
- Canadian Mental Health Association Ontario <https://network.cmha.ca/the-fine-balance-between-data-and-peer-support/>
- RDP <http://www.recoveryanswers.org/assets/RDP-2020.pdf>
- Recovery Link <https://myrecoverylink.com/provider/>



# Resources

- ReCAPS  
[http://www.brauchtworks.com/yahoo\\_site\\_admin/assets/docs/Recovery\\_Capital\\_Assessment\\_Plan\\_and\\_Scale\\_-\\_ReCAPS\\_160717.3200420.pdf](http://www.brauchtworks.com/yahoo_site_admin/assets/docs/Recovery_Capital_Assessment_Plan_and_Scale_-_ReCAPS_160717.3200420.pdf)
- Recovery Capital Index <https://recoverycapital.io/>
- Recovery Planning Worksheet  
<https://www.spokanecounty.org/DocumentCenter/View/3049/Sample-Recovery-Plan-Worksheet-PDF>



**FACES & VOICES  
OF RECOVERY**

ADVOCATE. ACT. ADVANCE.