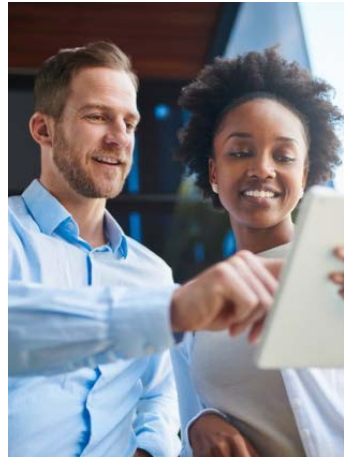


Who Do BHWD (PWI & EPOC) Grantees Serve?

The California Department of Health Care Services Behavioral Health Workforce Development (BHWD) project is expanding the behavioral health workforce to improve participant access to and productive participation in services statewide. Through the Expanding Peer Organization Capacity (EPOC) and Peer Workforce Initiative (PWI) grants, BHWD supports peer organizations with training, technical assistance, and other services as they grow their workforces.

Fifty-two of 59 grantees provided information for this infographic. Thirty-four reported on age and race/ethnicity and 29 reported on gender identity. This infographic represents data collected from Q4, 4/1/22 to 6/30/22.



OVERVIEW OF GRANTEES

Participants Served by EPOC and PWI Grantees



80% of our staff are now peers and we hired two staff exclusively for our bilingual Latinx programs.

- PWI Grantee, San Mateo

DEMOGRAPHICS

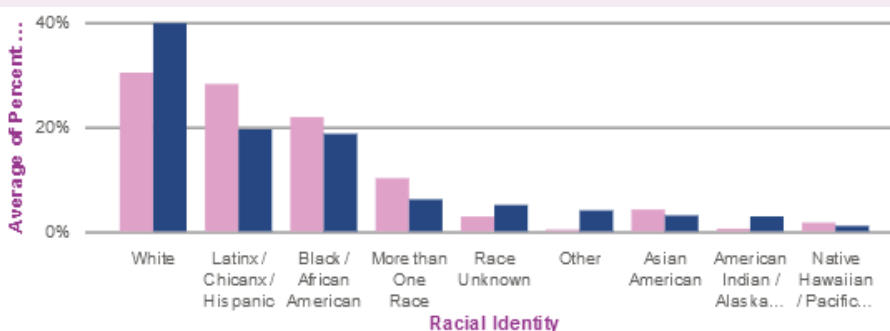
81% of EPOC/PWI grantees serve homeless or unhoused populations

92% serve those experiencing or recovering from mental illness

87% serve those experiencing or recovering from SUD

73% serve those re-entering from incarceration

Participants by Racial Identity



Funding Round ● EPOC ● PWI

Number of Grantees that report on racial demographics: 34

Individuals Served (by race) (averages)

White: 38%

Latinx/Chicanx/Hispanic: 21%

Black/African American: 19%

Who Do BHWD (PWI & EPOC) Grantees Serve?

Individuals Served (by age)

(average)

Most people served are between 26 and 65

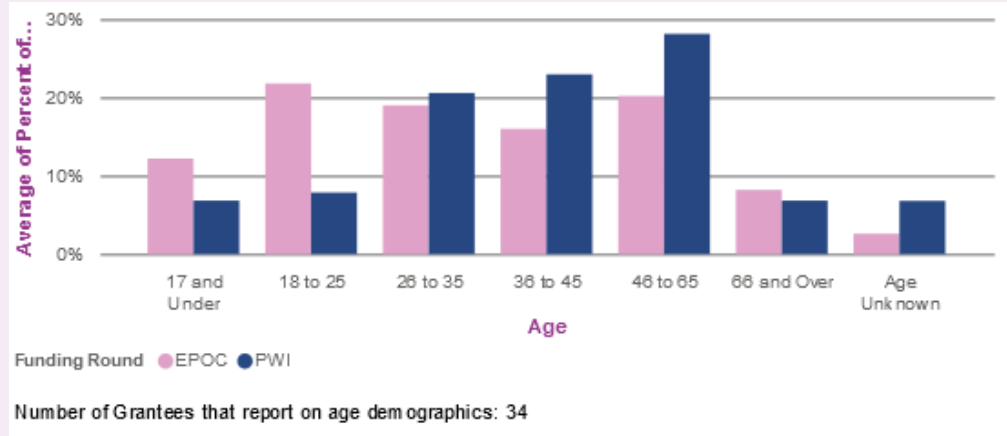
27% are ages 46 to 65

22% are ages 36 to 45

20% are ages 26 to 35

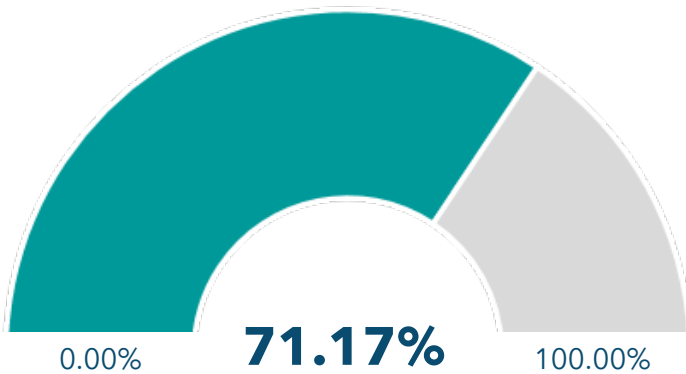
~10% of the populations served identify with the LGBTQIA+ community

Participants by Age



PEER SERVICES

71% of participants receive peer services



We have created relationships with community BH and recovery services providers so that we can work together to link clients to the right resources at the right time.

-PWI Grantee, Northern California

With grant funding, we were able to expand our relationship with a major LGBTQ+ mental health provider and for the first time we worked with them to co-host a WRAP group for LGBTQ+ transition-age youth.

-PWI Grantee, Bay Area

